

INSTRUMENT  
APPROACH  
CHART

AERODROME ELEV. 23ft.  
HEIGHTS RELATED TO  
THR RWY 19L-ELEV.19ft

APP. 119.3/127.9  
TWR.118.1

KOLKATA  
INDIA  
ILS (Z) (Cat-I) RWY19L

All distances & radials are from (112.5 CEA) VOR unless otherwise specified.

BEARINGS ARE MAGNETIC  
ALTITUDE, ELEVATIONS AND HEIGHTS IN FEET.  
COORDS OF RADIO NAV AID WGS-84

GP In-Operative procedure	
IF	12D(IDUM)
Altitude over IF	2000 ft.
FAF	4.3D(IDUM)
Altitude over FAF	1390 ft.
Descent Gradient	5.24%
Glide Angle	3°
MAPT	.1D (IDUM)

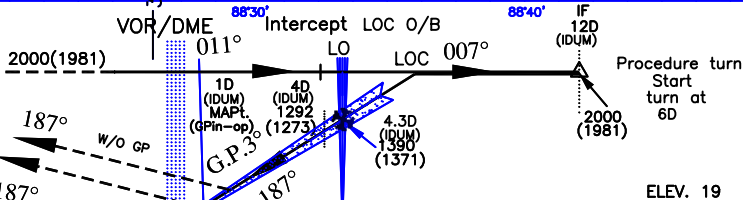
DME REQUIRED

**CAUTION:-**  
1. Identify Runway 19L before landing.  
2. Do not mistake BARRACKPORE Airfield for Kolkata airfield, BARRACKPORE Airfield (Rwy orientation 02/20) located 330°/9.1NM from Kolkata airfield.

Transition Altitude 4000  
MISSED APPROACH  
Climb straight ahead to 2000ft.  
then turn LEFT to join VOR  
(112.5CEA) holding or as  
instructed by ATC.

ILS RDH 54

NAUTICAL MILES FROM THR RWY 19L



O. C. A. (H)	Distance (IDUM) / Altitude information (GP-INOP)									
	A/B	C/D	Distance(NM)	6.2D	6D	5D	4D	3D	2D	1D
CATEGORY OF AIRCRAFT				2000	1940	1620	1300	990	670	450
STRAIGHT-IN	247(228)	247(228)								
VISUAL CIRCLING	720(697)	820(797)								
			Ground Speed / Rate of Descent Information							
G.P-Inoperative procedure			Ground speed (kt.)		80	100	120	140	160	180
STRAIGHT-IN			Rate of descent (ft/min)		420	525	630	735	845	950
VISUAL CIRCLING										

DRG. NO. AAI/5-IALC/2003/25-05-2017